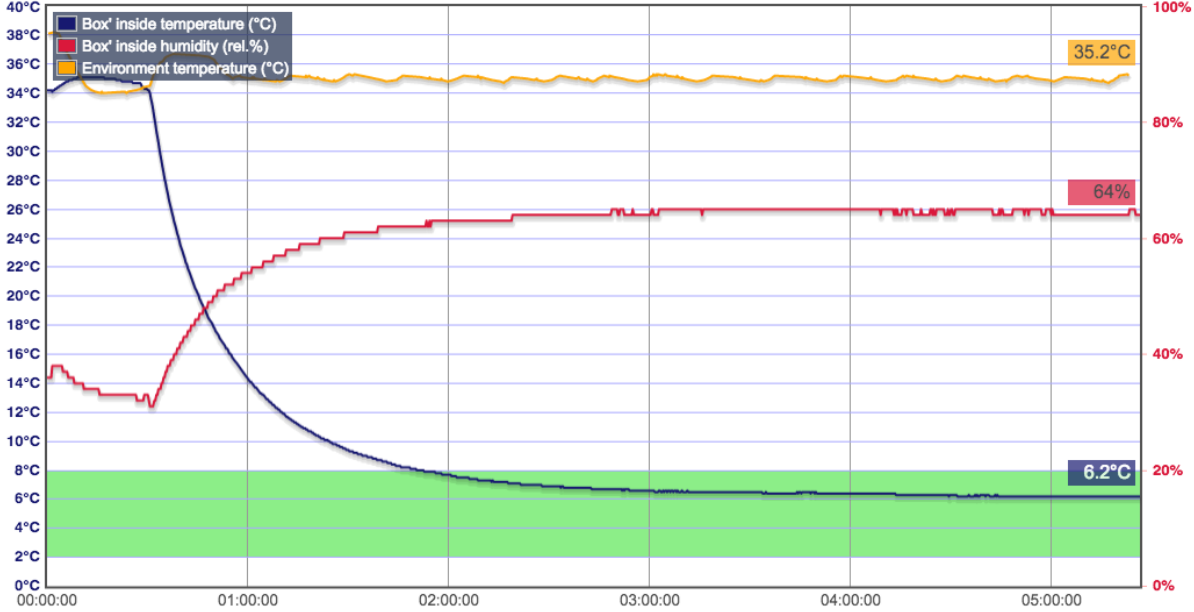




## CEPAC

... stands for **Courier-Express-Parcel-Active-Cooling**. CEPAC is the safest and most efficient way to transport any temperature-sensitive medication in a professional supply chain. It is compact, light-weight, robust and comes in various sizes.

- Instant active cooling & heating: 2-8°C & 15-25°C
- Parcel Sizes: 5/7/11 liters
- Weight: 6-10kg
- Stackable
- Voltages: 110-240 V AC & 12 V DC
- Power-independent runtime: up to 12/24/48 h (integrated battery)
- Personalized access, integrated display, hinged handle
- Live-Tracking: temperature, humidity, access, motion, GPS
- Warning functions
- Data-Access via web-browser or proprietary APIs



Temperature Profile at 35°C ambient temperature